

The Museum

Its rich collections, enumerating more than **11,000** exhibits, offer the visitor a panorama of ancient Greek culture from the beginning of prehistory to the late antiquity.

Permanent Collections

- ♦ The Collection of Prehistoric Antiquities
- ♦ The Sculpture Collection
- ♦ The Vase and Minerals Collection
- ♦ The Metallurgical Works Collection
- ♦ The Collection of Egyptian and Eastern Antiquities



Opening Hours

Tuesday: 13:00 pm - 20:00 pm

Wednesday - Monday: 08:00 am - 20:00 pm

General Information



Admission Fee
15€



44, 28th of October
Patission Street



+30 213 214 4891
+30 213 214 4889



info@namuseum.gr

Accessing the Museum



Metro

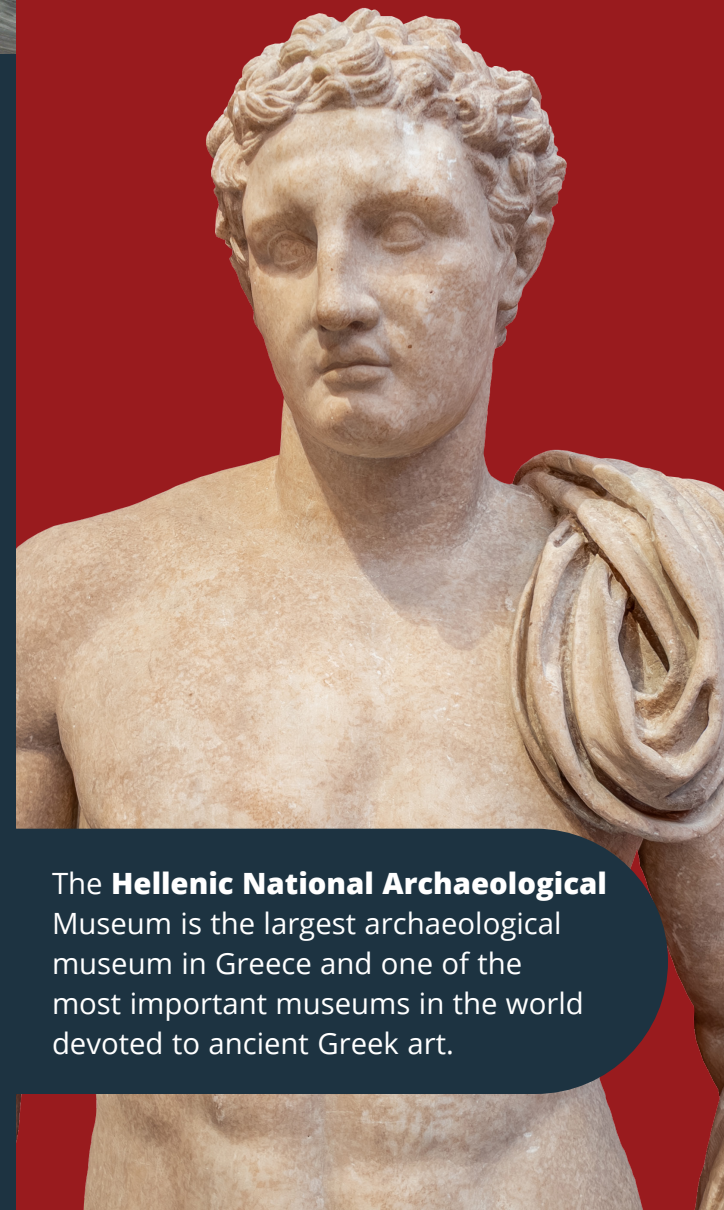


Bus



Train

The National Archaeological Museum

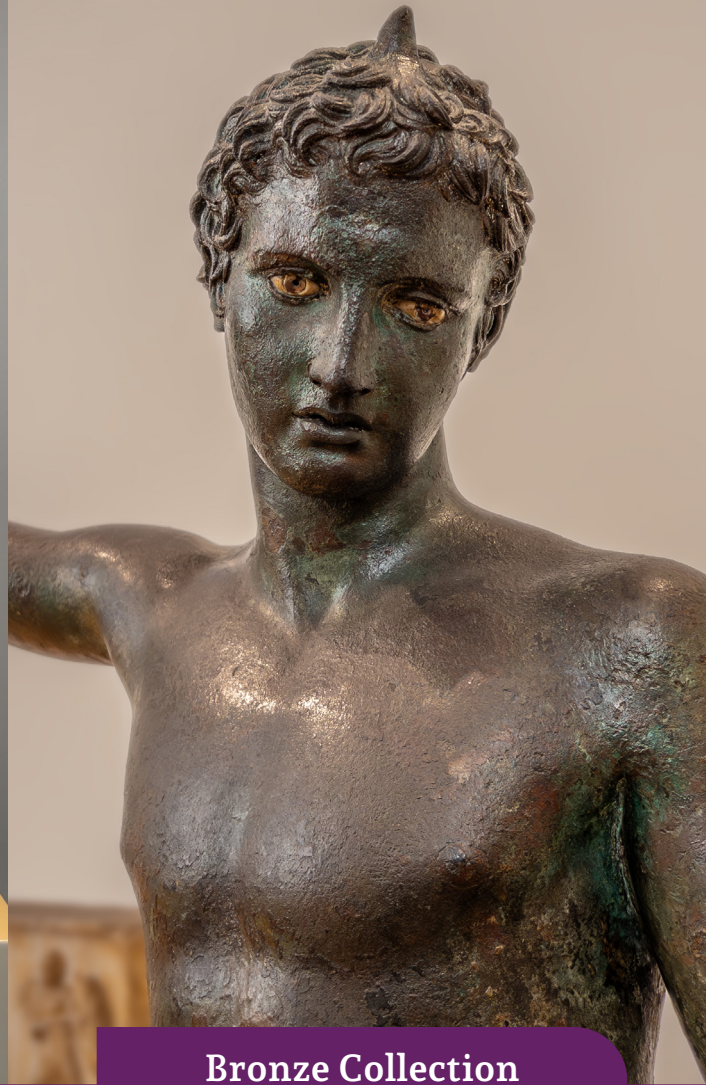


The **Hellenic National Archaeological** Museum is the largest archaeological museum in Greece and one of the most important museums in the world devoted to ancient Greek art.



**Collection of Mycenaean
Antiquities**

The **Prehistoric Collection** consists of unique works of art, representative of the civilizations that flourished in the Aegean Sea from the 7th millennium to around 1050 BC. It includes works of the Neolithic period and the Bronze Age from mainland Greece, the Aegean islands and Troy.



**Bronze Collection
Metalwork**

The **Bronze Collection** of the National Archaeological Museum constitutes one of the richest collections of original works made of bronze in the world. The majority of the them were unearthed during the major systematic excavations conducted in the late 19th and the early 20th century.



**Sculpture Collection
Hellenistic Period**

The **Sculpture Collection** with its unique exhibits, presents the evolution of ancient Greek sculpture from 700 BC to the 5th century AD. It was formed in 1874 from the temporary archaeological collections of Athens were gradually transferred to the Archaeological Museum.